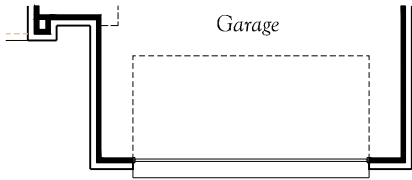
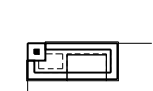




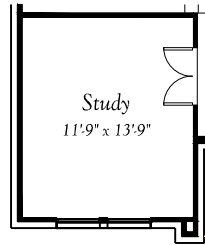
Nottingham  
 Plan 5050  
 Total Living 3269  
 W/Media Room 3513  
 W/Bedroom #5 &  
 Bath #4 3513



OPT. 3' EXT.



OPT. GRILL



Study  
11'9" x 13'9"

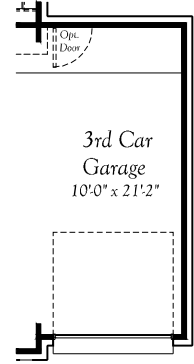
OPT. STUDY



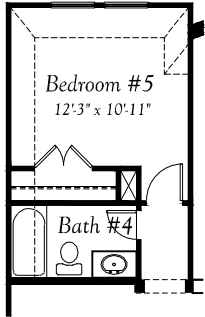
Master Suite  
OPT. BAY WINDOW  
Adds 44 Sq.Ft.



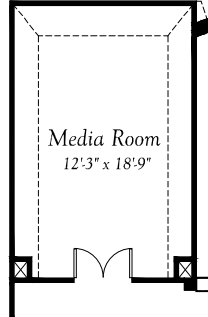
OPT. 5' EXT.



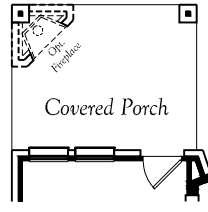
3rd Car  
Garage  
10'0" x 21'2"  
OPT. 3 CAR  
GARAGE



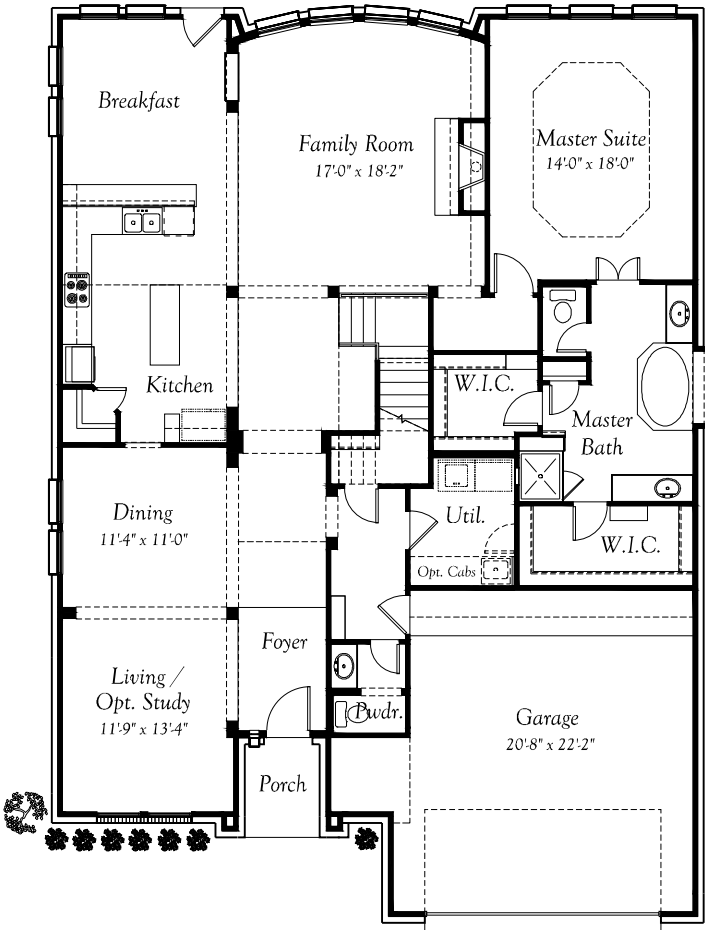
OPT. BEDROOM#5  
W/BATH#4  
Adds 244 Sq.Ft.



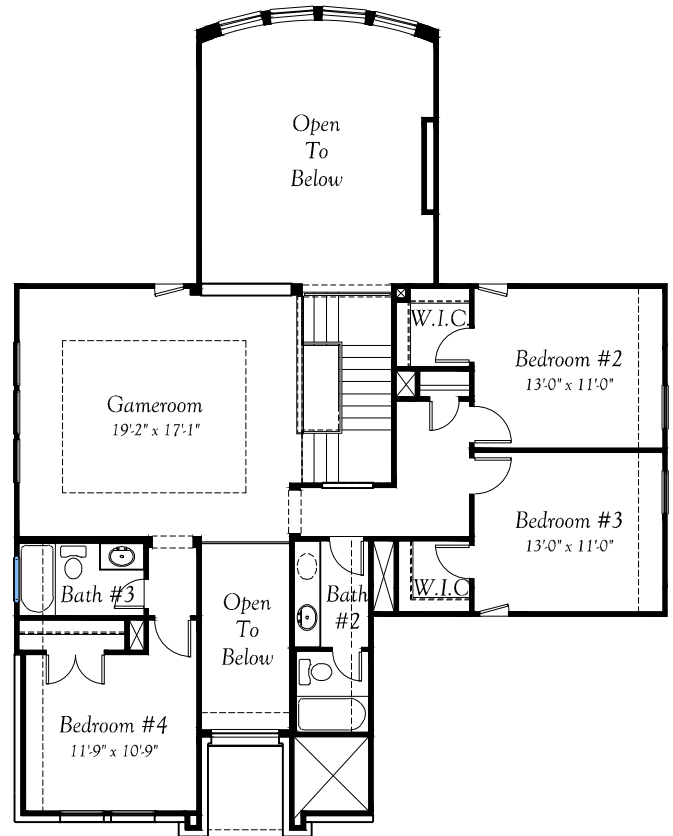
OPT. MEDIA ROOM  
Adds 244 Sq.Ft.



OPT. COVERED  
PORCH



FIRST FLOOR



SECOND FLOOR

In continuing efforts to improve our floorplans, they may change without notice. Square footages are approximate. Landscaping designs on handouts are for aesthetic purposes only.

